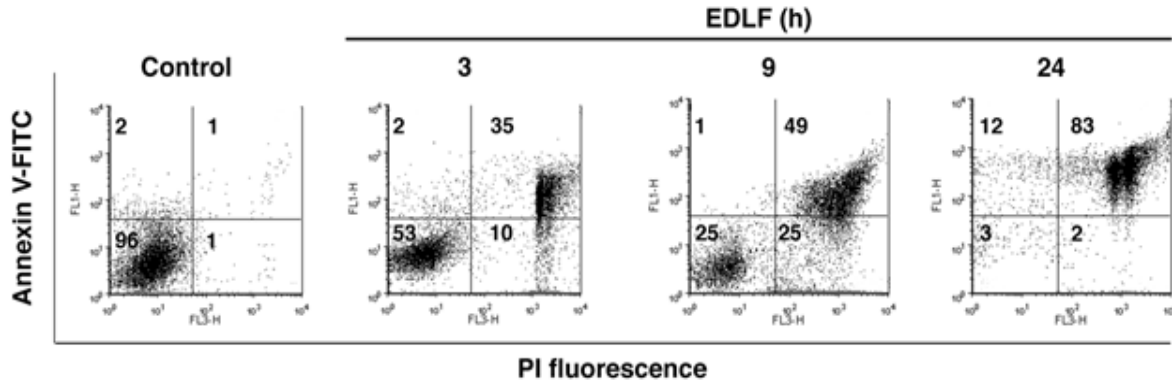


Necroptosis is associated with low procaspase-8 and active RIPK1 and -3 in human glioma cells

Supplementary Material



Supplementary Figure S1: Annexin V/PI staining in U118 cells treated with edelfosine for different incubation times. Annexin V/PI staining was analyzed from cells untreated (*Control*) and treated with 10 μ M edelfosine (*EDLF*) at the indicated time points. *Upper left quadrant* shows annexin V⁺/PI⁻ cells (early apoptotic cells). *Upper right quadrant* represents annexin V⁺/PI⁺ cells (necrotic or late apoptotic cells). Percentages of cells in each quadrant are indicated.

Supplementary Video S1: Time-lapse videomicroscopy of untreated control U118 cells. Cells were grown in complete DMEM culture medium supplemented with 10% heat-inactivated FBS. Recording time: 9 h. Magnification: 10x.

Supplementary Video S2: Time-lapse videomicroscopy of the effect of edelfosine on U118 cells. Film recording started immediately after addition of 10 μ M edelfosine on U118 cells grown in complete DMEM culture medium supplemented with 10% heat-inactivated FBS. Recording time: 9 h. Magnification: 10x.