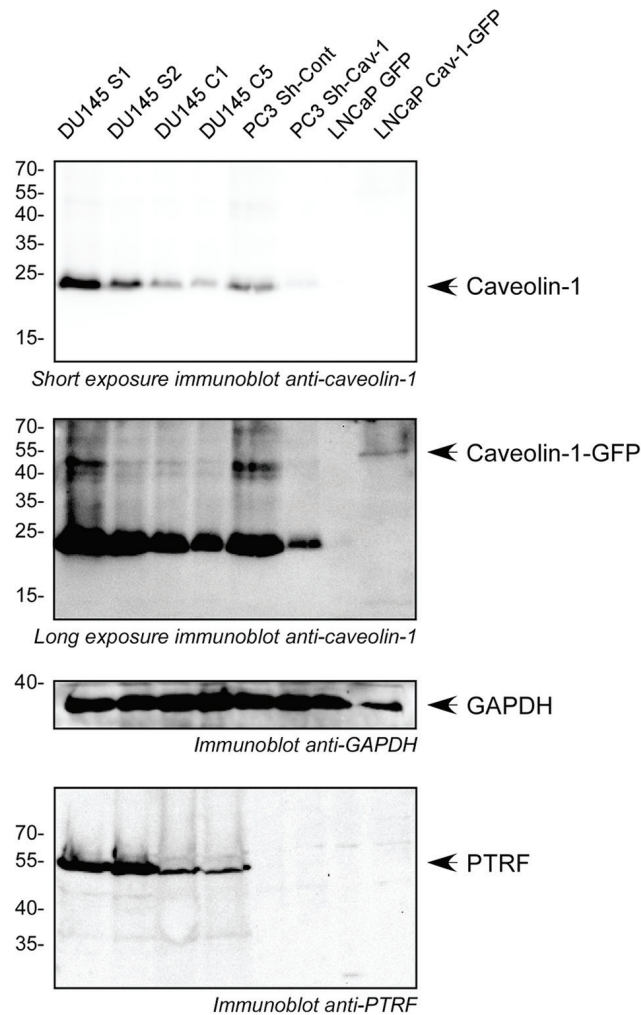


Non-caveolar caveolin-1 expression in prostate cancer cells promotes lymphangiogenesis

Supplementary Materials



Supplementary Figure 1: Characterization of Cav-1 and PTRF expression in prostate cancer cell lines. Cell lysates from prostate cancer cells were separated by SDS-PAGE and analysed by immunoblotting with anti-caveolin-1 anti-PTRF or anti GAPDH antibody as indicated. All cell lines on the same blots are shown, with caveolin-1 at long or short exposure.